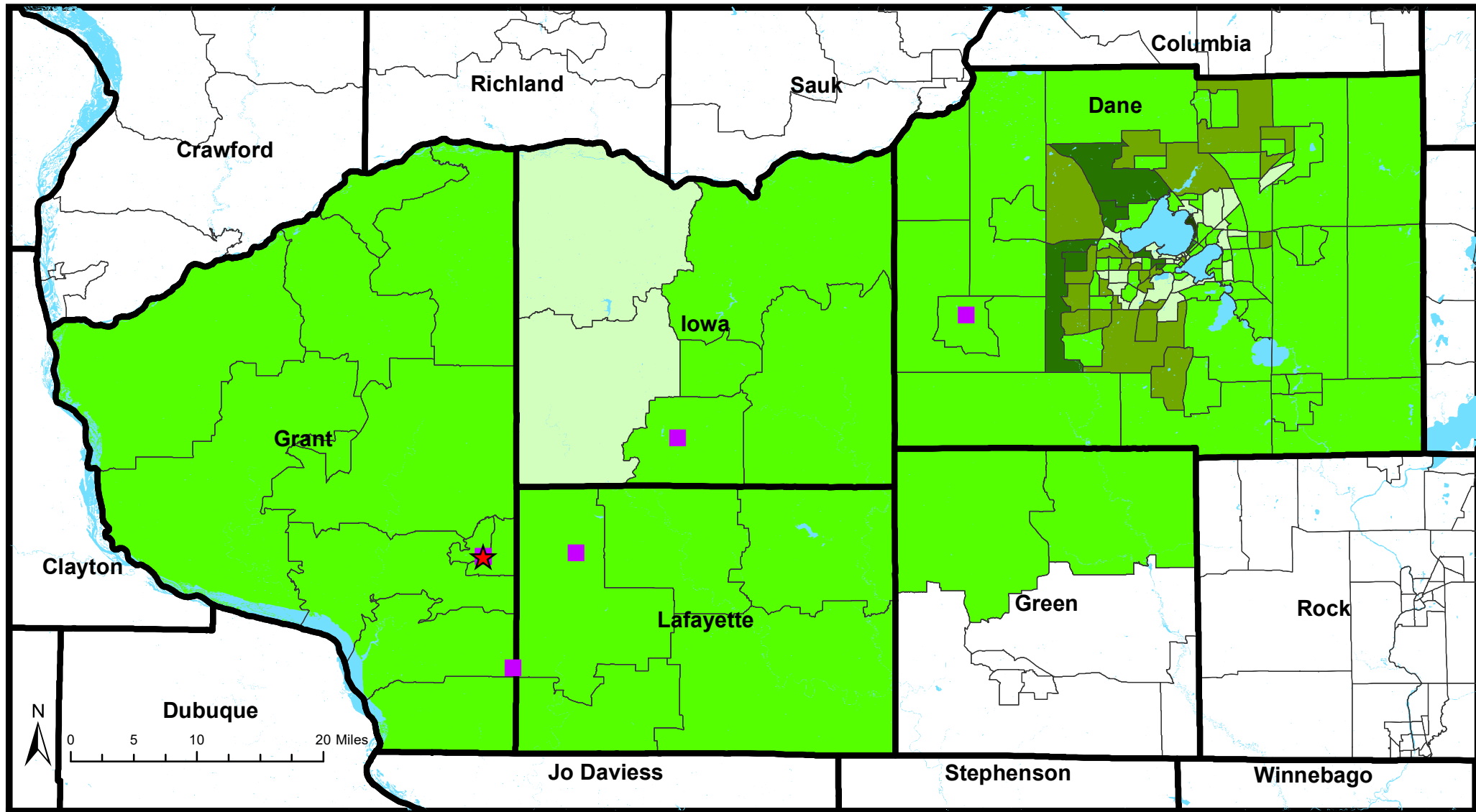


Mound City Bank Complete Assessment Area - 2023



Legend

- County Boundaries
- Census Tracts
- Water

Branches

- Main Office - Platteville
- Bank Branches

Median Household Income as a % of Total

- ≤ 80%
- 80.1% - 120%
- 120.1% - 160%
- 160.1% - 200%
- ≥ 200.1%

Green County Includes:
 53521 - Brooklyn
 53570 - Monticello
 53574 - New Glarus



MOUND CITY BANK